

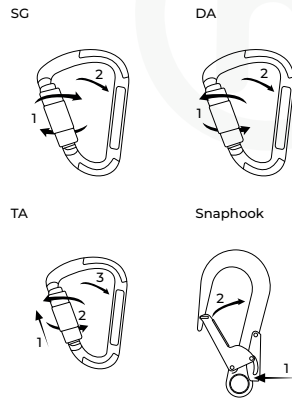


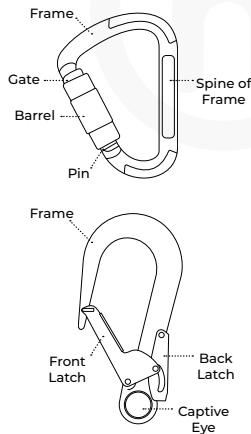
Explanation of Markings

- A  at height uk
- B <- -> xxkN
- C EN362:04
- D Kxx SG/DA/TA or Sxxx
- E CE 2777 CE 0082
- F XYYYYZZZ
- G 

Operation



Name of Parts



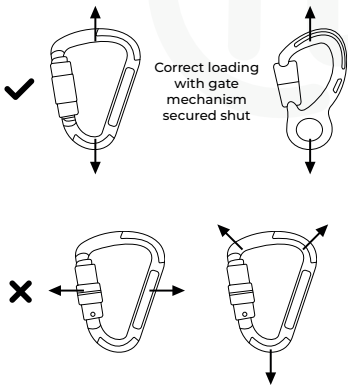
Gate Opening



Model (type B)	'A' mm
K10SG/DA/TA	17/16/16mm
K15SG/TA	19/19mm
K20SG/DA/TA	23/23/23mm
K30SG/TA	25/24mm
K40SGP/DAP/TAP	23/23/23mm
K50SG/DA/TA	31/31/31mm
K70DAP	50mm
Model (type T)	
K60DA/TA	23mm
Model (type A)	
S979B	61mm

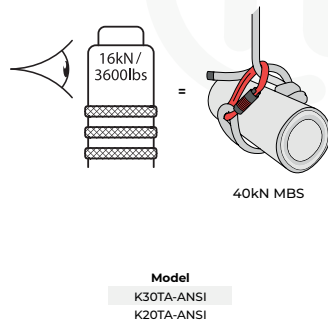
Karabiner Positioning

Correct & Incorrect Loading



Choke-hitch / Cross-loading

Karabiner Suitability



Product Inspection Record Card Example

Date	OK? (If no, report defects here)	Name & Signature	Date of Next Examination
Product Type and Identification Number	Year of Manufacture	Year of Purchase	Date of First Use

Product Details

These instructions cover the use of At Height Ltd Connectors, conforming to CE EN362:2004. This equipment may be used in conjunction with any appropriate item of Personal Protective Equipment (PPE) relevant to European Union Directive 2016/425. They may be acceptable for use in other applications, if in doubt contact At Height Ltd.

Markings/Labeling:

- A Manufacturer's identification
- B Minimum Breaking Strength
- C European Standard
- D Product Code
- E CE Mark and notified body number.
- F Year of Manufacture, Batch Number, Serial Number (e.g. 200100001)
- G Book Pictogram - reminder that the end user should read and understand the supplied user instructions.

WARNING!

Working at height and related activities are inherently dangerous. It is the responsibility of any person using this equipment to learn, understand and practice the proper techniques for use of the equipment for its designated purposes. It is impossible for this document to cover every eventuality and incorrect use of this equipment may result in fatal consequences. This equipment should only be used by a competent person or a person specifically trained in its use. This equipment should not be used by persons with medical conditions that may affect the safety of the user. You are responsible for your own actions and any person using this equipment assumes all risks and full responsibility for all damages or injury which may result from the use of it. No responsibility will be accepted by At Height Ltd for damage, injury or death resulting from misuse. It is impossible in this booklet to cover all methods of use. The following instructions and pictograms show some of the common correct and incorrect methods of use; it is impossible to predict them all. There is no substitute for instruction by a trained and competent person. It is essential that a risk assessment is carried out prior to any use and a rescue plan shall be in place to deal with any emergencies that could arise during the work. If this product is resold outside the original country of destination the reseller should provide these instructions for use in the language of the country in which the product is sold.

Gate Mechanisms

Immediately before, during and after use, visually/functionally inspect to ensure that this equipment is in a serviceable condition and operates correctly. Do a functional check by fully opening the gate then release - the gate should fully close and self-lock (except screwgate mechanism). A thorough examination must be carried out at least annually by a competent person or more frequently depending on local legislation, intensity of use, or external factors such as temperature, the effects of chemicals, rust, abrasion or other local damage. All inspections should be recorded in recorded in an equipment record log similar to the one below.

The user should be aware of its history (use, storage, inspection etc.). If this equipment is not for personal use (e.g. used in mountaineering centers), we strongly recommend a systematic approach to record keeping. This should always be carried out by a competent person. If you are in any doubt about the safe condition of this equipment, or if it has been used in a fall arrest it should immediately be withdrawn from use and checked by a competent person.

Cleaning, Storage and Transport

This equipment must not be marked, modified or repaired by the user. Note: This equipment is not user maintainable with the exception of the following:
Cleaning: if required clean with a mild household detergent and rinse in clean water. Thoroughly rinse and dry naturally in a warm ventilated room away from direct heat. Important: Cleaning is recommended after every use in a marine environment.
Lubrication: Lubricate the mechanism with suitable light oil. This should be carried out after cleaning. Cleaning and lubrication may cure a defective mechanism, if it does not, replace the product immediately. Lubrication is recommended after every use in a marine environment.
Storage and transport: this product should be stored in a clean, dry environment free from chemicals or corrosives and away from excessive heat or high humidity.

Lifespan

This is the maximum life of the product, subject to detailed conditions, that the Manufacturer recommends that the product should remain in service. Metal Products - Indefinite. This may be as little as a single use, (or even earlier if damaged e.g. in transit or storage prior to first use) when considering the following criteria: fall arrest, general wear, chemical contamination, corrosion, mechanical malfunction/ deformation, cracks, loose rivets, heat contamination (over normal climatic conditions), clear and readable marking (e.g. marking, batch reference, individual serial numbers etc.). Materials used are primarily steel, stainless steel and aluminium.

In Use

The anchorage point of your fall arrest system should be a minimum conform to EN795 (or appropriate International Standard depending on which country the equipment is sold) and ideally be positioned above the user in such a way to minimise the potential for falls and fall distance. The length of the connector should be taken into account when used in a fall arrest system as it will influence the overall fall distance.

Care must be taken if this connector is likely to be loaded using wide straps (> 12mm wide) as this may reduce the strength of the connector if loading occurs. Avoid loading the connector in multiple directions. Avoid sideloading the connector or loading it over an edge.

Connectors with manual locking/self closing gates should only be used where the user does not have to attach and remove the connector frequently.

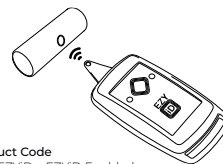
When using a captive pin the rope or webbing should be captivated inside the eye.

This equipment is designed for use in normal climatic conditions (-40°C - +50°C).

Do not make alterations or carry out repairs to this equipment. This equipment should not be used outside of its limitations or for any purpose other than that which it is intended. Danger may arise from the use of combinations of items of equipment in which the safe function of any one item is affected by or interferes with the safe function of another.

EZYID Compatibility

Where products are EZYID enabled it means they can be or are fitted with a highly robust RFID tag which contains a unique serial number that is permanently associated with the product. This makes ongoing identification of the product easier and could significantly increase its lifespan.



Product Code
xxxx/EZYID = EZYID Enabled


Declaration of Conformity

At Height Ltd declares that the products described above conform to the EU Regulation 2016/425 for Personal Protective Equipment according to applicable Standard EN362:2004.

Declaration of Conformity can be found on the relevant product pages at www.atheightuk.com

(everything else in that D of C section can be deleted except the address details)

At Height Ltd
41c Underbank, Old Road,
Holmfirth, HD91AS
United Kingdom



at height.uk
www.atheightuk.com
info@atheightuk.com

Manufactured & Supplied by
www.atheightuk.com

Karabiners / Snaphooks
Kxx / Sxxx

